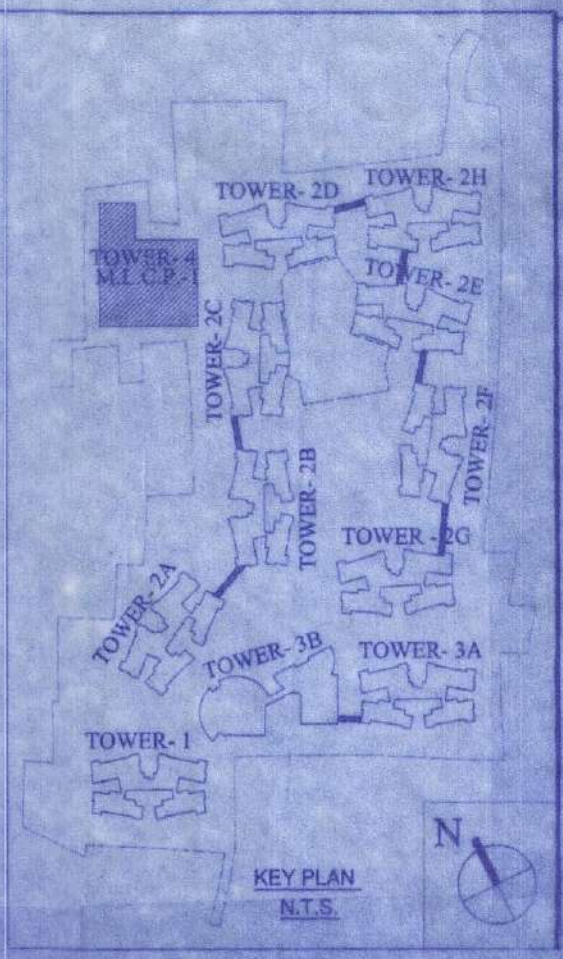


ELEVATION



KEY PLAN N.T.S.

NAME OF OWNER
NAME OF THE COMPANY

1. M/s. Alishan Supply Private Limited
2. M/s. Adya Real Estates Private Limited
3. M/s. Anchor Vanija Private Limited
4. M/s. Anratma Advisory Private Limited
5. M/s. Anratma Dealers Private Limited
6. M/s. Anuragan Supply Private Limited
7. M/s. Aravali Hirse Private Limited
8. M/s. Arch Vanija Private Limited
9. M/s. Arpana Consultancy Private Limited
10. M/s. Arpana Tie Up Private Limited
11. M/s. Artline Homes Private Limited
12. M/s. Artline Projects Private Limited
13. M/s. Artline Realstate Private Limited
14. M/s. Average Complex Private Limited
15. M/s. Average Housing Private Limited
16. M/s. Average Infracon Private Limited
17. M/s. Average Nirman Private Limited
18. M/s. Average Projects Private Limited
19. M/s. Basudev Enclave Private Limited
20. M/s. Basudev Housing Private Limited
21. M/s. Bluebird Tie Up Private Limited
22. M/s. Booster Heights Private Limited
23. M/s. Booster Hirse Private Limited
24. M/s. Brijbhumi Agents Private Limited
25. M/s. Brijbhumi Tie Up Private Limited
26. M/s. Citywings Vyapaar Private Limited
27. M/s. Crossway Heights Private Limited
28. M/s. Crossway Nirman Private Limited
29. M/s. Dayanidhi Suppliers Private Limited
30. M/s. Delta Vyapaar Private Limited
31. M/s. Dhanganga Hirse Private Limited
32. M/s. Dhanganga Infracon Private Limited
33. M/s. Dhanganga Realty Private Limited
34. M/s. Dhanganga Residency Private Limited
35. M/s. Dreamland Hirse Private Limited
36. M/s. Elegant Nirman Private Limited
37. M/s. Gajbadan Vinimay Private Limited
38. M/s. Gajgamiini Buldcon Private Limited
39. M/s. Gajgamiini Constructions Private Limited
40. M/s. Gajgamiini Hirse Private Limited
41. M/s. Gajgamiini Realty Private Limited
42. M/s. Gajmukhi Enclave Private Limited
43. M/s. Gajmukhi Homes Private Limited
44. M/s. Gajmukhi Infracon Private Limited
45. M/s. Gajmukhi Nirman Private Limited
46. M/s. Gajmukhi Projects Private Limited
47. M/s. Gajmukhi Realstate Private Limited
48. M/s. Ganesh Tracom Private Limited
49. M/s. Ganeshvani Promoters Private Limited
50. M/s. Greentop Nirman Private Limited
51. M/s. Guidance Vyapaar Private Limited
52. M/s. Gullmarg Vyapaar Private Limited
53. M/s. Hanurang Tie Up Private Limited
54. M/s. Indivar Tracom Private Limited
55. M/s. Jainendra Distributors Private Limited
56. M/s. Jainendra Marketing Private Limited
57. M/s. Jainendra Merchants Private Limited
58. M/s. Jalgham Advisory Private Limited
59. M/s. Jalgham Tie Up Private Limited
60. M/s. Jhilmil Sales Private Limited
61. M/s. Jhilmil Vyapaar Private Limited
62. M/s. Jinay Merchants Private Limited
63. M/s. Juh Marketing Private Limited
64. M/s. Kalakriti Enclave Private Limited
65. M/s. Kalakriti Homes Private Limited
66. M/s. Kalakriti Housing Private Limited
67. M/s. Kalakriti Properties Private Limited
68. M/s. Kalakriti Realty Private Limited
69. M/s. Kamayali Consultants Private Limited
70. M/s. Lifelong Enclave Private Limited
71. M/s. Limelight Hirse Private Limited
72. M/s. Linkrose Constructions Private Limited
73. M/s. Linkrose Housing Private Limited
74. M/s. Linkrose Residency Private Limited
75. M/s. Manobal Dealer Private Limited
76. M/s. Manobal Vanija Private Limited
77. M/s. Matrix Sales Private Limited
78. M/s. Maxflow Barter Private Limited
79. M/s. Moonlife Constructions Private Limited
80. M/s. Moonlife Nirman Private Limited
81. M/s. Moonlife Residency Private Limited
82. M/s. Mridul Advisory Private Limited
83. M/s. Newwave Merchants Private Limited
84. M/s. Original Realty Private Limited
85. M/s. Panghat Supply Private Limited
86. M/s. Pawanputra Barter Private Limited
87. M/s. Pawanputra Sales Private Limited
88. M/s. Prabhakar Barter Private Limited
89. M/s. Prajapati Commercial Private Limited
90. M/s. Prajapati Dealer Private Limited
91. M/s. Premsagar Advisory Private Limited
92. M/s. Premsagar Tie Up Private Limited
93. M/s. Prime Rose Marketing Private Limited
94. M/s. Radial Housing Private Limited
95. M/s. Radial Residency Private Limited
96. M/s. Rimjihim Commodities Private Limited
97. M/s. Rosemary Distributors Private Limited
98. M/s. Rosemary Tie Up Private Limited
99. M/s. Sadabahar Vyapaar Private Limited
100. M/s. Sagun Advisory Services Private Limited
101. M/s. Sanjvani Vanija Private Limited
102. M/s. Sangam Vyapaar Private Limited
103. M/s. Sawarg Vanija Private Limited
104. M/s. Shivasthal Dealers Private Limited
105. M/s. Shivasthal Sales Private Limited
106. M/s. Siddha Style Barter Private Limited
107. M/s. Sidhant Suppliers Private Limited
108. M/s. Silverline Vinimay Private Limited
109. M/s. Skylink Merchants Private Limited
110. M/s. Spandan Suppliers Private Limited
111. M/s. Splendor Vyapaar Private Limited
112. M/s. Style Merchants Private Limited
113. M/s. Sukhjit Vyapaar Private Limited
114. M/s. Sunmart Vyapaar Private Limited
115. M/s. Sunshine Barter Private Limited
116. M/s. Superior Complex Private Limited
117. M/s. Superior Hirse Private Limited
118. M/s. Surdhuni Advisory Private Limited
119. M/s. Sursarita Advisory Services Private Limited
120. M/s. Sursarita Consultants Private Limited
121. M/s. Swastik Barter Private Limited
122. M/s. Terapanth Consultancy Services Private Limited
123. M/s. Timeless Realstate Private Limited
124. M/s. Topten Vyapaar Private Limited
125. M/s. Vidhata Advisory Services Private Limited

| SCHEDULE OF DOORS & WINDOWS (MLCP) | | | | |
|------------------------------------|---------------|--------|-------------|--------------|
| NO. | SILL | LINTEL | SIZE | REMARK |
| F.C.D | - | 2150 | 1125 X 2150 | STAIR |
| D | - | 2150 | 1200 X 2150 | LOBBY |
| D4 | - | 2150 | 1000 X 2150 | STAIR |
| D4A | 150 | 2300 | 1000 X 2150 | STAIR (ROOF) |
| D4B | 250 | 2300 | 1000 X 2050 | STAIR (ROOF) |
| SW1 | 350 | 2150 | 1200 X 1800 | STAIR |
| SW1 | 350 | 2150 | 1100 X 1800 | STAIR |
| D2 | - | 2150 | 750 X 2150 | TOILET |
| V | AS PER DETAIL | | | TOILET |

CERTIFICATE OF STRUCTURAL ENGINEER
 CERTIFY THAT THE STRUCTURAL DRAWING AND DESIGN OF BOTH THE FOUNDATION AND SUPERSTRUCTURE OF THE BUILDING 7 BUILDINGS HAS BEEN MADE CONSIDERING THE SOIL TEST REPORT, AS PER THE RULES AND REGULATIONS MADE UNDER THE ACT AND ALSO CONSIDERING ALL POSSIBLE LOADS, SEISMIC LOAD AND THE MOMENTS GENERATED BY THE PROPOSED STRUCTURE AS PER THE BUREAU OF INDIAN STANDARD AND NATIONAL BUILDING CODE OF INDIA AND CERTIFIED THAT IT IS SAFE AND STABLE IN ALL RESPECT AND THESE PROVISIONS SHALL BE ADHERED TO DURING THE CONSTRUCTION.

SANJIV J. PAKKISH
 M.E. (STRUCT.), M.E. (CONST. ENG.),
 B. C. E., FIP (F-118202-4)
 STR/NKDA/10/00030

SIGNATURE OF STRUCTURAL ENGG.
 NAME: Sanjiv Pakkish
 ENROLLMENT NO.: STR/NKDA/10/00030

CERTIFICATE OF ARCHITECT
 I CERTIFY THAT ALL THE ARCHITECTURAL DRAWINGS OF THE PROJECT AT R.S. DAG NOS. 470(P), 471(P), 473, 474, 475, 476, 477, 478, 479, 480, 481, 483, 489, 490, 491, 492, 493, 494, 495, 496, 497, 499, 500, 501(P), 502(P), 503, 504(P), 506(P), 507(P), 509(P), 528(P), 529(P), 530(P), 531, 532, 533 & 501/716(P), OF MOUZA - BHATENDA, J.L. NO.28 HAVE BEEN PREPARED BY ME COMPLYING WITH THE NEW TOWN KOLKATA PLANNING AREA (BUILDING) RULES, 2014. I ALSO CERTIFY THAT THE PLANS AND DRAWINGS PREPARED BY ME COMPLYING WITH ALL THE PROVISIONS REGARDING THE FIRE PROTECTION AS PER THE PREVAILING NATIONAL BUILDING CODE OF INDIA I SHALL BE HELD RESPONSIBLE IF ANY INCORRECT INFORMATION IS FURNISHED BY ME OR ANY VIOLATION OF PROVISIONS OF THESE RULES OR THE PREVAILING NATIONAL BUILDING CODE IS FOUND IN ANY OF THE DRAWINGS AND DOCUMENTS, SIGNED BY ME AND SUBMITTED TO THE SANCTIONING AUTHORITY FOR OBTAINING SANCTION.

M. Agrawal
 MONAL AGRAWAL
 Regd. Architect
 New Town Kolkata Development Authority
 Enrolment No. ACHR/NKDA/10/00020

SIGNATURE OF ARCHITECT
 NAME: MONAL AGRAWAL
 ENROLLMENT NO.: ACHR/NKDA/10/00020

CERTIFICATE OF GEO - TECHNICAL ENGINEER
 IT IS CERTIFIED THAT THE COMPREHENSIVE GEO-TECHNICAL REPORT ON SOIL INVESTIGATION HAS BEEN PREPARED BY ME FOR DESIGN AND CALCULATION OF THE FOUNDATION BY ANALYZING THE SOIL SAMPLES FOR ESTIMATING THE BEARING CAPACITY OF THE SOIL ON WHICH FOUNDATION OF THE STRUCTURE WILL BE CONSTRUCTED. I SHALL ALSO CHECK THE NATURE OF THE SOIL AFTER EXCAVATION AT SITE SO THAT FOUNDATION IS EXTENDED UP TO THE APPROPRIATE DEPTH THAT HAS BEEN PROPOSED IN THE GEO-TECHNICAL REPORT.

JISHNU PAL
 B.Tech (Civil), M.E. (Geo-tech)
 KMC Reg No: G.T / 1 / 32
 GTER / NKDA / 10 / 0043
 22 / RJSON / G-T-1 / 2016-17

SIGNATURE OF GEO - TECHNICAL ENGINEER
 NAME: Shyamal Kumar Mitra
 ENROLLMENT NO.: GTER-HIDCO/09/00010

Subir Ranjan Sarkar
 Subir Ranjan Sarkar
 Regd. Town Planner
 New Town Kolkata Development Authority
 Enrolment No.: TPER/NKDA/10/00036

SIGNATURE OF TOWN PLANNER OR URBAN DESIGNER
 NAME: Subir Ranjan Sarkar
 ENROLLMENT NO.: TPER/NKDA/10/00036

SANJIV GUHA
 BSC, BCE, FIE (F-115654-51)
 CHARTERED ENGINEER
 STR/NKDA/15/00003

SIGNATURE OF STRUCTURAL REVIEWER
 NAME: Sanjiv Guha
 ENROLLMENT NO.: STRV/NKDA/15/00003

TITLE
 ABOVE ROOF PLAN, ELEVATION, SEC-QQ, RR & XX
 TOWER-4 (M.L.C.P.)

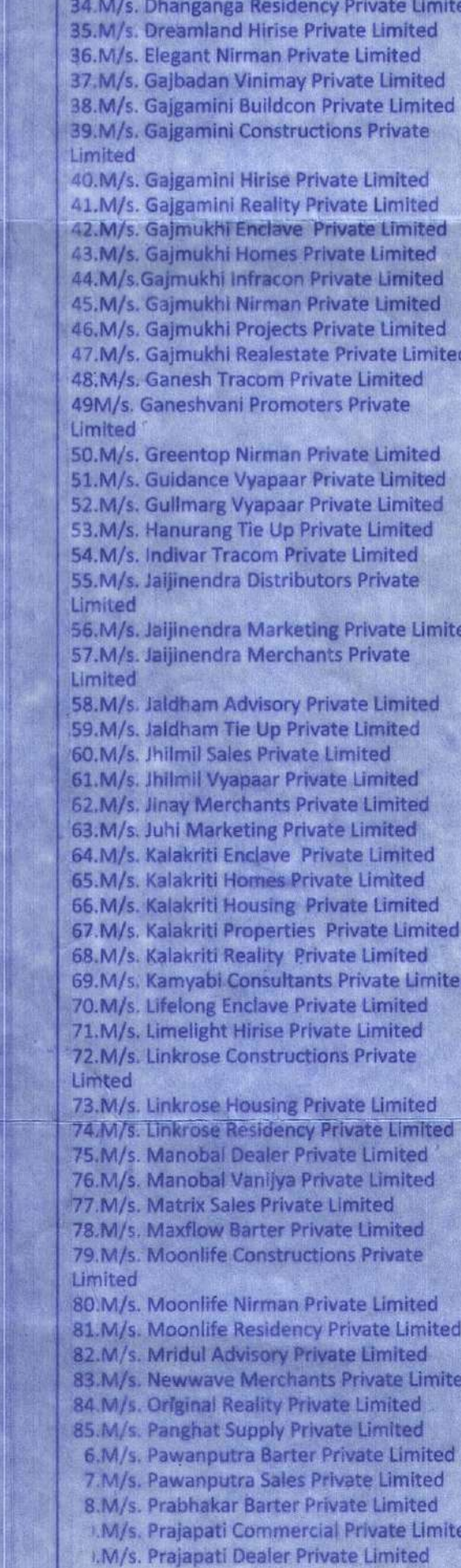
PROJECT:
 PROPOSED ADDITION OF (G+X IX) STORED RESIDENTIAL BUILDING NAMEDLY TOWER-2H & REVISION OF (G+H+VI) STORED M.L.C.P BUILDING NAMEDLY TOWER-4 WITH PREVIOUS SANCTIONED OF (G+H) STORED BUILDING NAMEDLY 3B AND 9NOS. (G+X IX) STORED RESIDENTIAL BUILDING NAMEDLY TOWER - 1, 2A, 2G, 3A, 2B, 2C, 2D, 2E & 2F APPROVED BY EXECUTIVE OFFICER, RAJARHAT PANCHAYAT SAMITI VIDE MEMO NO. 926/RPS DATED 28/08/2018.

IN WHICH OCCUPANCY CERTIFICATE HAS BEEN OBTAINED FOR 4NOS. TOWER NAMEDLY TOWER - 1, 2A, 2G & 3A VIDE MEMO NO. 2696/RPS DATED 01.08.2019 FROM RAJARHAT PANCHAYAT SAMITI, IN RESIDENTIAL COMPLEX AT MOUZA - BHATENDA, J.L. NO. 28, R.S./L.R. DAG NOS. 470(PART), 471(PART), 473, 474, 475, 476, 477, 478, 479, 480, 481, 483, 489, 490, 491, 492, 493, 494, 495, 496, 497, 499, 500, 501(PART), 502(PART), 503, 504(PART), 506(PART), 507(PART), 509(PART), 528(PART), 528(PART), 529(PART), 530(PART), 531, 532, 533 & 501/716(PART), P.S - RAJARHAT, WITHIN THE JURISDICTION OF RAJARHAT BISHNUPUR NO. 1 GRAM PANCHAYAT, DIST. - NORTH 24 PARGANAS.

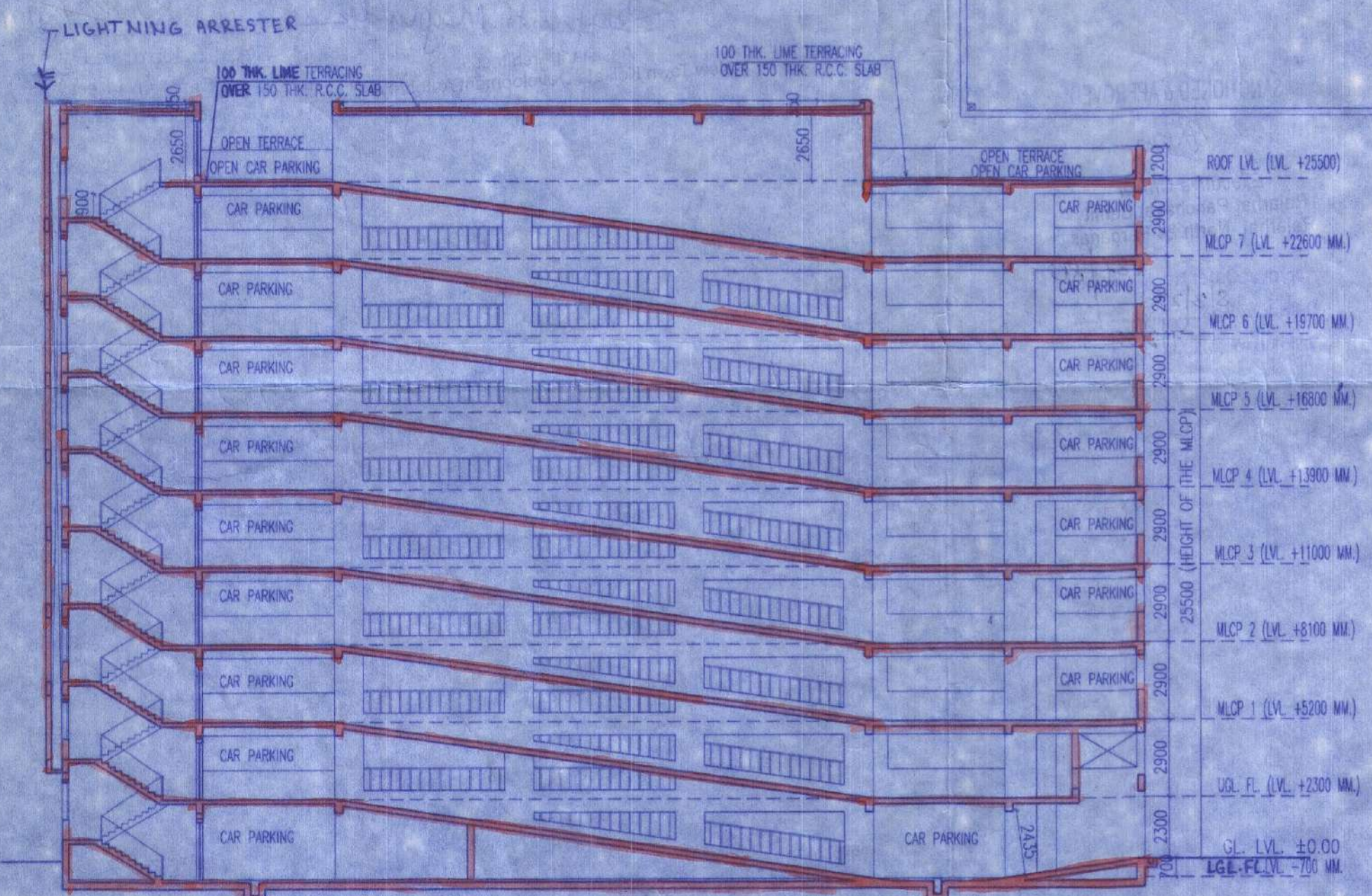
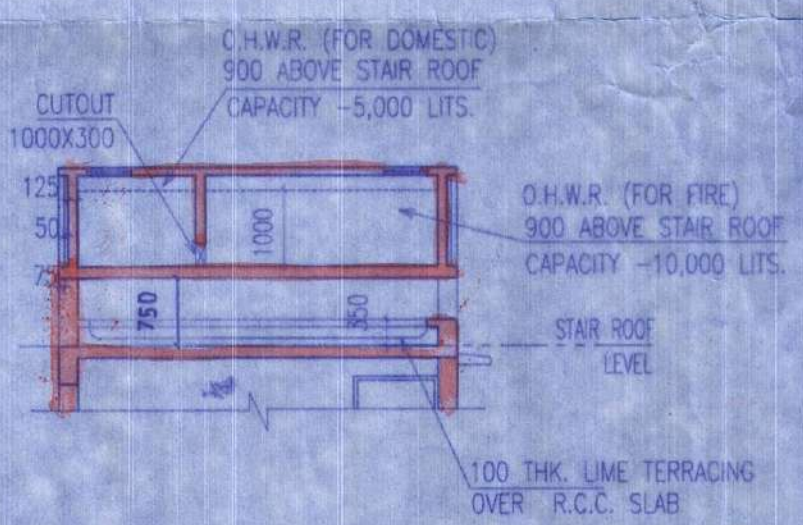
| ARCHITECTS | | | | |
|-------------------|---------|-------|------------|-----------|
| AGRAWAL & AGRAWAL | | | | |
| BARODA | KOLKATA | SCALE | DATE | SHEET NO. |
| | | 1:200 | 05.03.2021 | 10 OF 14 |
| | | DEALT | GARGI | CHECKED |
| | | | SHILA | |

SIGNATURE OF OWNER
 Alishan Supply Private Limited and Others
 111, Park Street, 1st Floor, Kolkata - 700 016

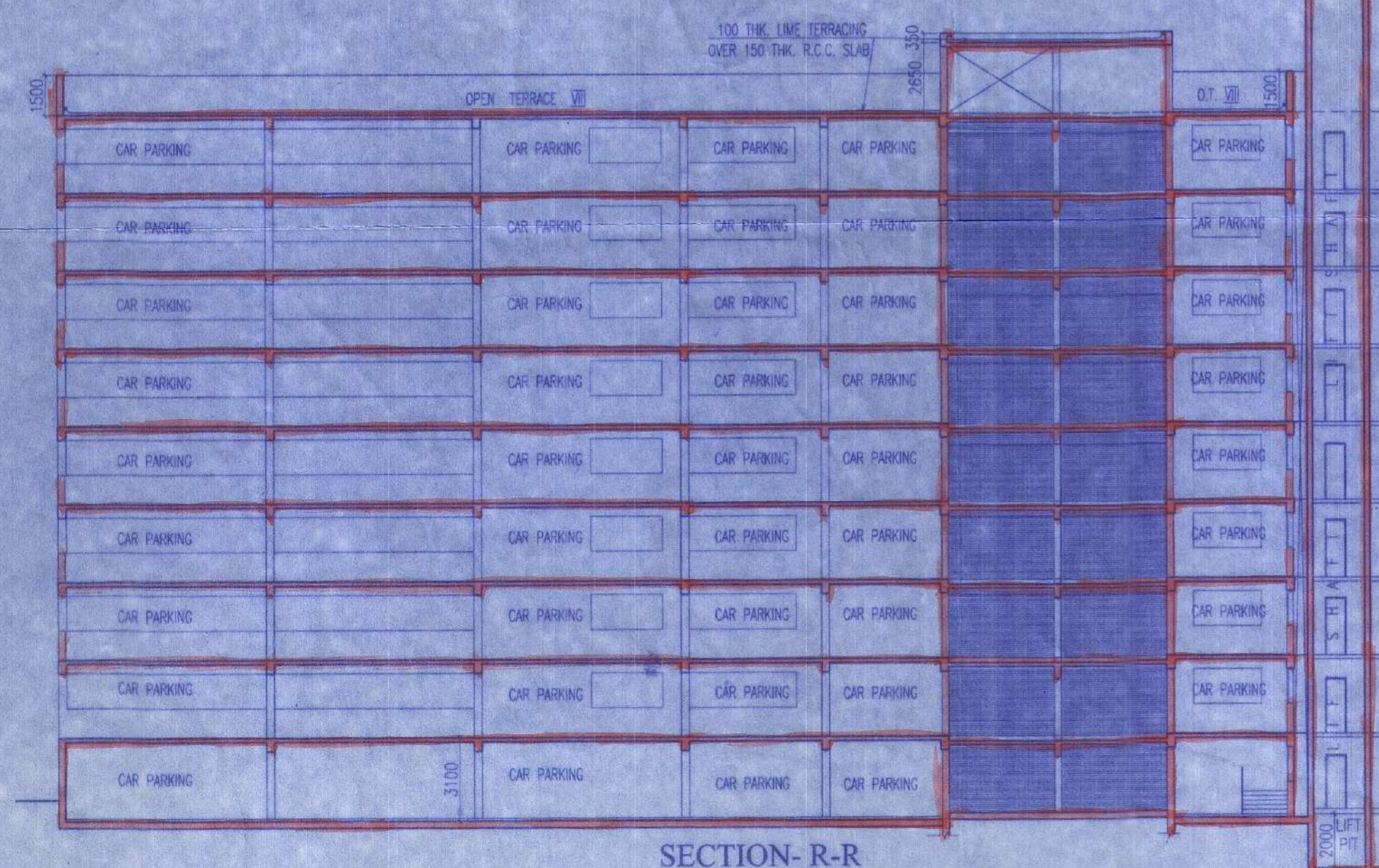
ABOVE ROOF PLAN



SECTION X-X
 SCALE 1:100



SECTION- Q-Q



SECTION- R-R

ARCHITECT: **Monal Agorwal** Enrollment No: **AHR/NKDA/10/00020**
 CIVIL/STRUCTURAL ENGINEER: **Sanjiv Parekh** Enrollment No: **STER/NKDA/10/00030**
 GEO-TECHNICAL ENGINEER: **Jishnu Pal** Enrollment No: **GTER/NKDA/10/00043**
 TOWN PLANNER/URBAN DESIGNER: **Subir Ranjan Sarker** Enrollment No: **TPER/NKDA/10/00036**
 STRUCTURAL REVIEWER: **Sanjib Guha** Enrollment No: **STRV/NKDA/15/00003**

STRUCTURAL DRAWINGS, STRUCTURAL DESIGN CALCULATIONS & SOIL TEST REPORT ARE NOT CHECKED AND KEPT FOR RECORDS ONLY.

Note: This NOC has been issued on the basis of documents submitted by the applicant and forwarded by the Addl. Executive Officer, North 24 Parganas Zilla Parishad. If there was material misrepresentation or fact or fraudulent act or any act of suppression of fact in connection with the above project including the concerned land, plans, drawings, design etc. then, this NOC shall stand cancel.

NEW TOWN KOLKATA DEVELOPMENT AUTHORITY
 No Objection Certificate for
 Sanction of Building Plan for Construct. Purpose
 Memo No. **481/NKDA/EPS-04(3)/2020**
 Date: **24/01/22**

Proposed addition of one (g+1x1x) storied residential building (Tower-2H) and Revision of NLCB Block at mouza- Bhatenda, J.L.No. 28, North 24 Pgs.

Note: All the recommendations from Pollution Control Board is to be followed throughly at the time of construction.

11/11
 Tower A
 Overex Roof Plan, Elevation &
 SECTION

SANCTIONED & APPROVED

 Executive Officer
 Rajarhat Panchayat Samity
 Rajarhat, North 24 Parganas
 Approval Order No. **287/RPS**
 Date: **8/3/22**
 Valid up to: **7/3/27**

Sayanti Majumder
 Assistant Architect
 New Town Kolkata Development Authority

Tapan Kumar Dwari
 Chief Architect
 New Town Kolkata Development Authority